



RIGHT FROM
THE START

Low Voltage Packaging Solutions

Current: 10 A–3000 A
Voltage: 230 V–1200 V

AuCom
MOTOR CONTROL SPECIALISTS

A member of the
Benshaw Group



BENSHAW
Applied Motor Controls



RIGHT FROM
THE START

Table of contents

LV PACKAGING SOLUTIONS	4
MOTOR CONTROL SYSTEMS	5
STANDARDS	5
AT A GLANCE	6
INQUIRY INFORMATION	7
THE FUTURE STARTS WITH AUCom	8
PRODUCT PORTFOLIO LOW VOLTAGE	9
CSXi SERIES	10
EMX4i WITH EMX4i TECHNOLOGY	11
MX4PB PART NUMBER ASSEMBLER	12
MX4PB SERIES IP54	13

**You know your application;
we know the right drive technology.**

LET'S USE SYNERGIES

The LV Packaging Solutions cabinets has been especially developed for the implementation of motor control in the special customer application. The devices are individually produced as single unit or as small series, configured, and tested in Sendenhorst, Germany.

On request we pack and deliver them worldwide.

LV Packaging Solutions

The cabinets can be equipped with additional elements, such as circuit breakers, fuse load disconnectors, but also communication cards, temperature controllers or other components.

The shown options are only a short selection of the Aucom MCS® solutions.

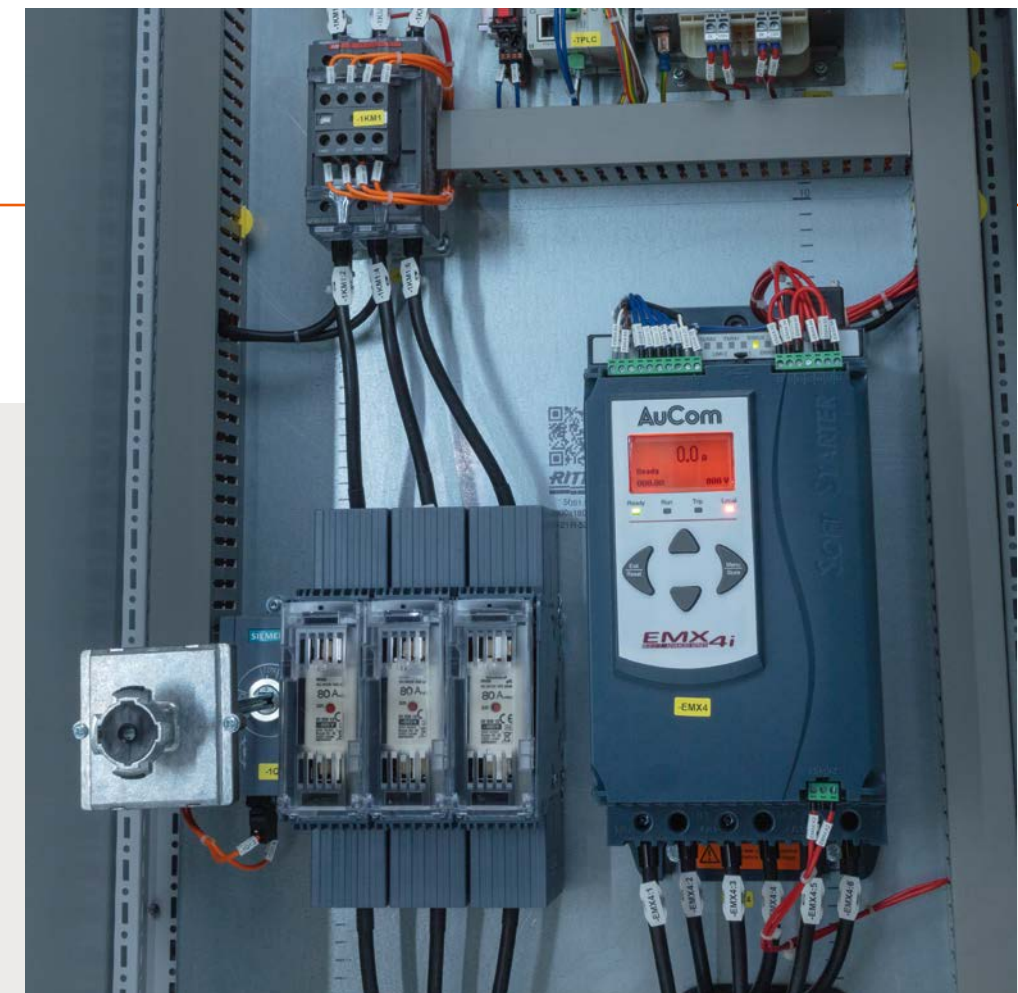
Contact us so that we can develop the ideal concept according to the customer specification and your requirements.

Motor control systems

- CSXi soft start with internal bypass
- EMX4i/EMX4e soft start with internal/external bypass
- Contactors for DOL-; Star/Delta-Start with motor protection relays
- Variable Frequency Drive (different types)

Standards

- Certified according to ISO 9001 and ISO 14001
- High quality standard "Made in Germany"
- Cabinets according to marine societies
- High reputed products (well-known standard suppliers)
- IP54 enclosure
- Standard and heavy-duty ratings
- Rittal cabinets
- High short circuit capability

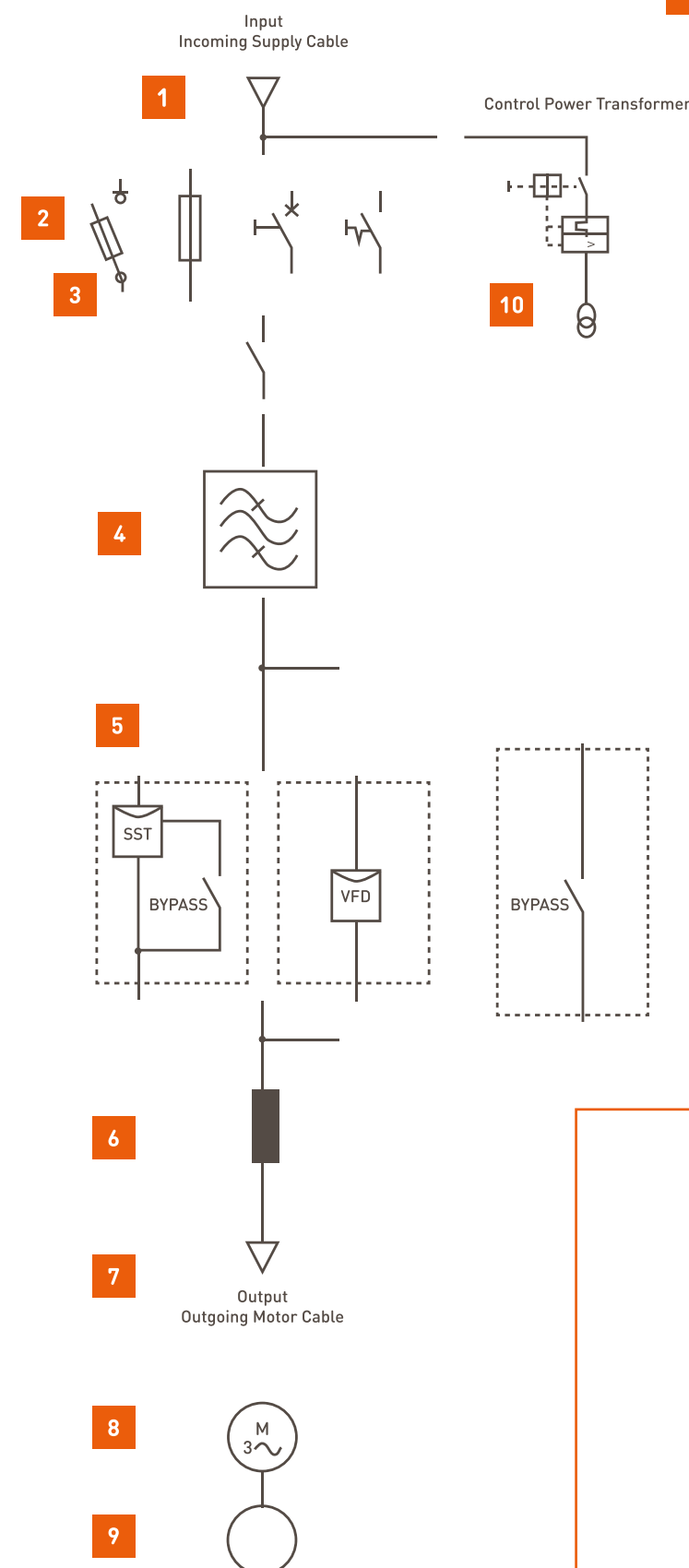


At a glance

- **Perfect match to the application**
- **Motor control via:**
 - DOL-start
 - Star-/Delta-Start
 - Soft Starter
 - VFD
- **Best price/performing ratio**
- **Additional components to integrate:**
 - Circuit Breakers
 - Semiconductor fuses
 - Disconnecting switch
 - Contactor for disconnecting, forward/backward, etc.
 - Door mount keypad/HMI with protective cover
 - Communication cards for remote access and control
 - Control Power Transformer
 - Space heater control Terminal strip for customer control logic
 - ...



Inquiry information



- 1 Supply-Incoming
- 2 Main Disconnect
- 3 Input Isolation Contactor
- 4 Line-side reactors and filters
- 5 VFD/SST-Type Dynamic Braking (only for VFD) Bypass
- 6 Output Filter/reactor
- 7 Output Cable Length
- 8 Motor Data
- 9 Application/Load Data
- 10 Options

The future starts with AuCom

We develop motor control products for industrial applications across the world. Our focus on research and development, as well as manufacturing, supply and support, ensures that when you choose to work with AuCom, you're working with a global leader. Forty years of experience added to our expertise and ability means you can rely on us to get it right from the start.

OUR APPROACH

We start with a challenge or application, working with you to define and develop a solution that's not only fit for purpose today, but fully supported into tomorrow.

OUR PARTNERS

We choose partners that are experts, not only in, soft start and motor control, but in understanding the needs of their industry. We work closely with our partners to ensure customers receive only the best support and advice.

OUR PEOPLE

The power behind our success doesn't rely on our innovative products alone. Our people play a pivotal role. That's why, with AuCom, it's always personal. Combining dedication and experience with ability and passion, we don't just listen more closely, we draw on the breadth of our expertise to better understand your unique requirements and offer real solutions and ongoing support.



Product portfolio low voltage

PRODUCT	DESCRIPTION	SCOPE OF SERVICES
EMX4i	Digital Soft Starter, 3 phase with integrated Bypass	24 A-1250 A / 200 V-690 V
EMX4i	Digital Soft Starter, 3 phase with external Bypass	200 A-3000 A / 200 V-1200 V
EMX4e	Digital Soft Starter, 2 phase with integrated Bypass	24 A-580 A / 200 V-575 V
CSXi	Analog Soft Starter, 2 phase with integrated Bypass/motor protection function	18 A-200 A / 200 V-575 V
CSX	Analog Soft Starter, 3 phase with integrated Bypass	18 A-200 A / 200 V-575 V
H2	VFD / Multi-Purpose Industrial Drive	240 V: 5,6-18,6 kW (ND), 0,37-14,9 kW (HD) 480 V: 5,6-597 kW (ND), 0,37-447,4 kW (HD)



CSXi Series

PUMP PANELS STARTERS

STANDARD ENCLOSED SOFT START PUMP PANELS

Standard features:

- IP54 enclosure
- CSXi solid state starter with built-in bypass
- Circuit breaker with door operator (35 kAIC)
- Control power transformer
- Space heater with thermostat
- Start/Stop Pushbutton, HOA, Power On/Run/Fault lights



MODEL NUMBER	STANDARD DUTY (KW)	MAX AMPS		CB	DIMENSIONS (MM)			WEIGHT (KG)	LIST PRICE
	400 VAC	40 °C	50 °C	RATING AMPS	H	W	D		
CSXi-0014-4-PP-N3R-CB-PD	7,5	18	17	40	500	400	200	17	3,205 €
CSXi-0034-4-PP-N3R-CB-PD	18,5	34	32	60	500	400	200	18	3,467 €
CSXi-0040-4-PP-N3R-CB-PD	22	42	40	70	500	400	200	20	3,537 €
CSXi-0052-4-PP-N3R-CB-PD	30	60	55	100	500	400	200	21	3,712 €
CSXi-0065-4-PP-N3R-CB-PD	37	75	68	125	600	500	250	30	4,441 €
CSXi-0077-4-PP-N3R-CB-PD	45	85	78	150	600	500	250	31	4,470 €
CSXi-0096-4-PP-N3R-CB-PD	55	100	100	150	600	500	250	35	4,718 €
CSXi-0125-4-PP-N3R-CB-PD	75	140	133	200	600	500	250	38	5,447 €
CSXi-0156-4-PP-N3R-CB-PD	90	170	157	250	600	500	250	39	5,756 €
CSXi-0180-4-PP-N3R-CB-PD	110	200	186	300	600	500	250	1	6,096 €

Note: These codes are for 480 VAC units.

EMX4i with EMX4i Technology

STANDARD AND HEAVY DUTY RATINGS

PREPACKAGED STARTERS WITH INTEGRAL RUN DUTY BYPASS

CONFIGURE THE EMX4I TO FIT YOUR APPLICATION

To choose a stock starter, simply select a unit from the following pages. Stock units ship the same-day.

To modify a starter, select a unit from the following pages, other options as needed from the options section. We will modify the stock unit for next day shipment.

EMX4i configurable solid state starters stocked as:

- Combination starter with circuit breaker*
- High fault rated (65 KAIC)
- Rotary disconnect operator
- EMX4i soft starter chassis
- Run duty bypass
- IP42, IP54 (IP65 enclosure with option adders)
- 400/690 V
- Standard 230V control power transformer
- Service entrance rated
- Door mounted keypad with IP65 cover (option)
- KP door mounted keypad IP56 (included)
- 65 KAIC rated standard

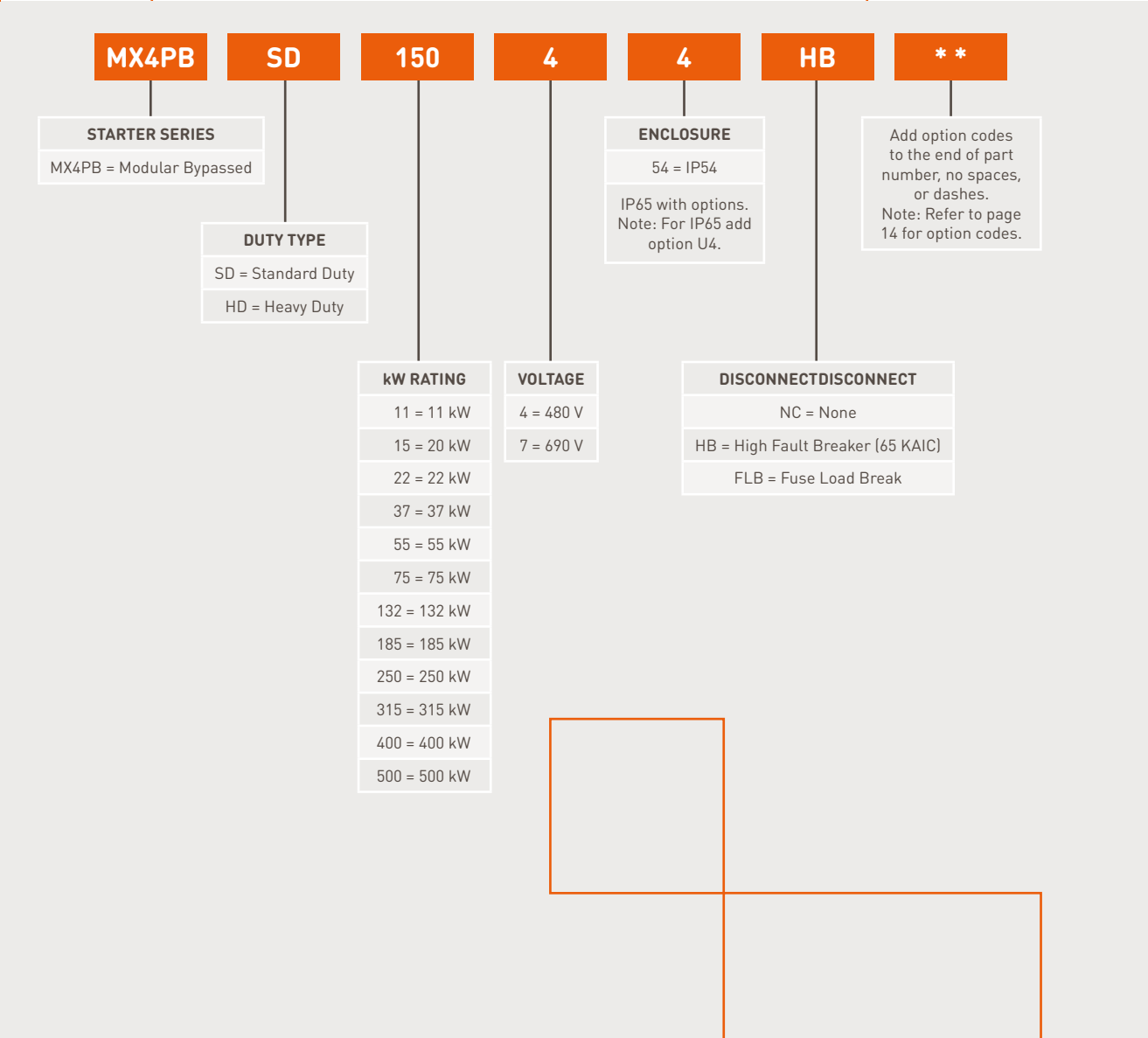


*also available as non-combination (without circuit breaker)

EMX4i features:

- Current limit ramp
- Soft brake
- SCR Failure Power Through
- Daily on/off scheduling
- Full graphical LCD display
- Real language feedback messages
- 8 languages: English, Chinese, German, Italian, French, Spanish, Brazilian Portuguese, Russian
- Real time graphs of motor operating performance
- Main menu and Quick Setup
- Logs: 384 events
- Easy and fast to operate interface
- Quick start application setup for easy commissioning
- Emergency Run (Fire Mode)
- Built-in Simulation Mode
- QR codes on display for fast and easy diagnostics
- USB port for Parameter upload / download, firmware upgrades, diagnostic logs

MX4PB Part
Number Assembler



MX4PB Series IP54

PREPACKAGED STARTERS WITH RUN DUTY BYPASS,
COMBINATION STARTERS WITH CIRCUIT BREAKER OR
FUSE LOAD BREAK

Standard Duty/ High Fault Breaker (65 kA Interrupt Rating)

480 VAC									
MODEL NUMBER	SD HIGH FAULT (KW)	MAX AMPS	BREAKER SIZE	V	DIMENSIONS (MM)			WEIGHT (KG)	IP54 LIST PRICE
					H	W	D		
MX4PB-SD-022-4-4-HB**	22	40	100	400	600	500	300	80	4,421 €
MX4PB-SD-037-4-4-HB**	37	65	100	400	600	500	300	80	4,558 €
MX4PB-SD-055-4-4-HB**	55	96	150	400	600	500	300	90	4,820 €
MX4PB-SD-075-4-4-HB**	75	124	200	400	900	800	400	100	7,144 €
MX4PB-SD-110-4-4-HB**	110	180	300	400	900	800	400	100	8,365 €
MX4PB-SD-132-4-4-HB**	132	240	400	400	900	800	400	100	9,796 €
MX4PB-SD-185-4-4-HB**	185	361	600	400	900	800	400	100	10,712 €
MX4PB-SD-250-4-4-HB**	250	477	800	400	900	800	400	200	13,194 €
MX4PB-SD-315-4-4-HB**	315	590	1000	400	2000	800	600	260	23,814 €
MX4PB-SD-400-4-4-HB**	400	702	1200	400	2000	800	600	270	24,467 €
MX4PB-SD-500-4-4-HB**	500	828	1200	400	2000	800	600	290	24,943 €
MX4PB-SD-600-4-4-HB**	600	959	1200	400	2000	800	600	290	27,296 €
MX4PB-SD-700-4-4-HB**	700	1156	1200	400	2000	800	600	290	29,120 €

690 VAC									
MODEL NUMBER	SD HIGH FAULT (KW)	MAX AMPS	BREAKER SIZE	V	DIMENSIONS (MM)			WEIGHT (KG)	IP54 LIST PRICE
					H	W	D		
MX4PB-SD-022-4-4-HB**	37	40	100	690	600	500	300	80	5,365 €
MX4PB-SD-037-4-4-HB**	60	65	100	690	600	500	300	80	6,125 €
MX4PB-SD-055-4-4-HB**	90	96	150	690	600	500	300	90	6,386 €
MX4PB-SD-075-4-4-HB**	110	124	200	690	900	800	400	100	8,265 €
MX4PB-SD-110-4-4-HB**	175	180	300	690	900	800	400	100	8,963 €
MX4PB-SD-132-4-4-HB**	220	240	400	690	900	800	400	100	10,875 €
MX4PB-SD-185-4-4-HB**	315	361	600	690	900	800	400	100	11,685 €
MX4PB-SD-250-4-4-HB**	400	477	800	690	900	800	400	200	15,486 €
MX4PB-SD-315-4-4-HB**	500	590	1000	690	2000	800	600	260	25,783 €
MX4PB-SD-400-4-4-HB**	600	702	1200	690	2000	800	600	270	26,983 €
MX4PB-SD-500-4-4-HB**	800	828	1200	690	2000	800	600	290	27,860 €

** Insert option code. See page 14 for a list of available options. Add options to the end of part number.
Standard duty = 350% current for 30 seconds, 1.15 S.F.
For IP65 add option U4

MX4PB Series IP54

PREPACKAGED STARTERS WITH INTEGRAL BYPASS

OPTIONS		
OPTION CODE		LIST PRICE
U4	Space Heater with Thermostat (add for IP65)	520 €

CONTROL OPTIONS (ONLY ONE CODE CAN BE SELECTED)		
OPTION CODE		LIST PRICE
QN	Run Light	141 €
QF	Reset Push-Buttons	96 €
CP	Start/Stop Push-Buttons	198 €
CQ	Start/Stop Push-Buttons and Run Light	265 €
CR	Start/Stop Push-Buttons, Run Light, Fault Light and Reset Push-Button	565 €
RK	Fault Light	141 €
CS	Fault Light and Reset Push-Button	237 €
CT	Run Light, Fault Light and Reset Push-Button	378 €
CU	H0A and Start/Stop Push-Buttons	367 €
CV	H0A , Start/stop Push-Buttons and Run Light	502 €
CW	H0A, Start/Stop Push-Buttons, Run Light, Fault Light and Reset Push-Button	740 €

COMMUNICATION INTERFACES FOR NETWORK INTEGRATION		
OPTION CODE		LIST PRICE
CE	DeviceNet Card, EMX4i	339 €
CJ	Modbus Card, EMX4i	257 €
CD	Profibus Card, EMX4i	441 €
CK	Modbus TCP Card, EMX4i	867 €
CL	Profinet Card. EMX4i	867 €
CF	Ethernet IP Card, EMX4i	867 €

Note: Only one can be selected

SMART CARDS		
OPTION CODE		LIST PRICE
SCC-PC-01	Smart Card, Pump Application [EMX4]	364 €

FINGERGUARD		
OPTION CODE		LIST PRICE
995-17309-00	Fingerguard IP20 Kit for Personnel Safety	219 €

RIGHT FROM
THE START

Follow us
on social
media



AuCom
MOTOR CONTROL SPECIALISTS

A high-tech power-electronics company at the forefront of design. Leading edge designs based on continuous field research, testing and development.

Comprehensive range of Soft Starter: Low Voltage and Medium Voltage units for standard and heavy-duty applications. Engineering of industrial electronic motor control systems.

AuCom Global Solutions

AuCom MCS GmbH & Co. KG

Borsigstraße 6, 48324 Sendenhorst, Germany
Fon + 49 2526 93880 - 0, Fax + 49 2526 93880 - 100
sales@aucom.com, www.aucom.com



A member of the
Benshaw Group



**RIGHT FROM
THE START**

Copyright AuCom MCS® GmbH & Co KG. All rights reserved. Copying and distribution of this pad, recovery and its contents is not permitted without express written authority. Offenders are liable to damages. All rights reserved, in particular for the granting of patents or registration.

Disclaimer

We have checked the contents of this publication agree with the hardware and software. Since deviations cannot be excluded, so that we do not accept liability for complete conformity. The information in this publication is reviewed regularly and any necessary corrections are included in subsequent editions.